

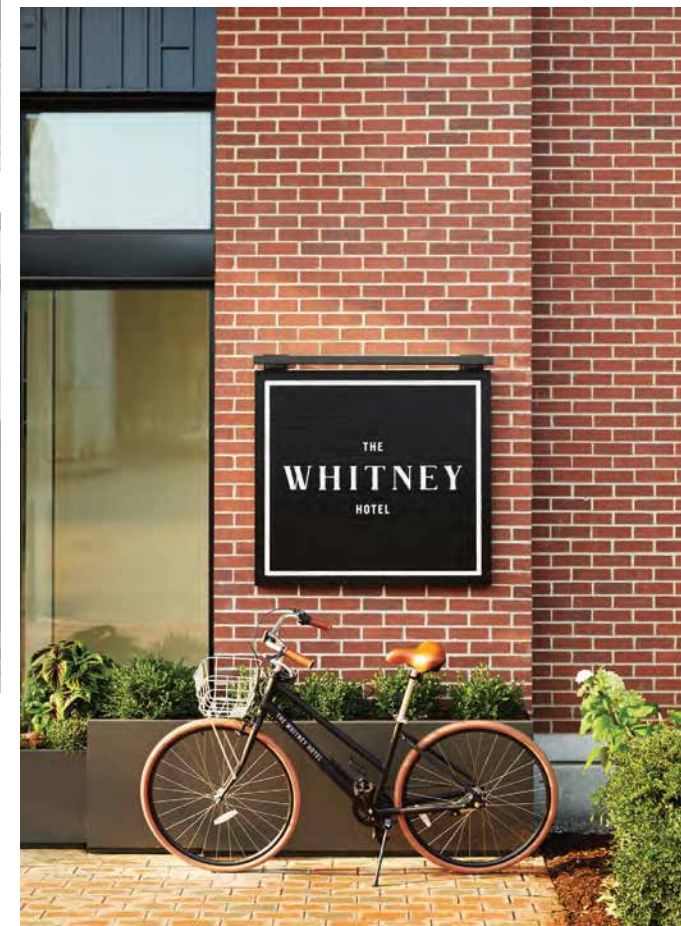
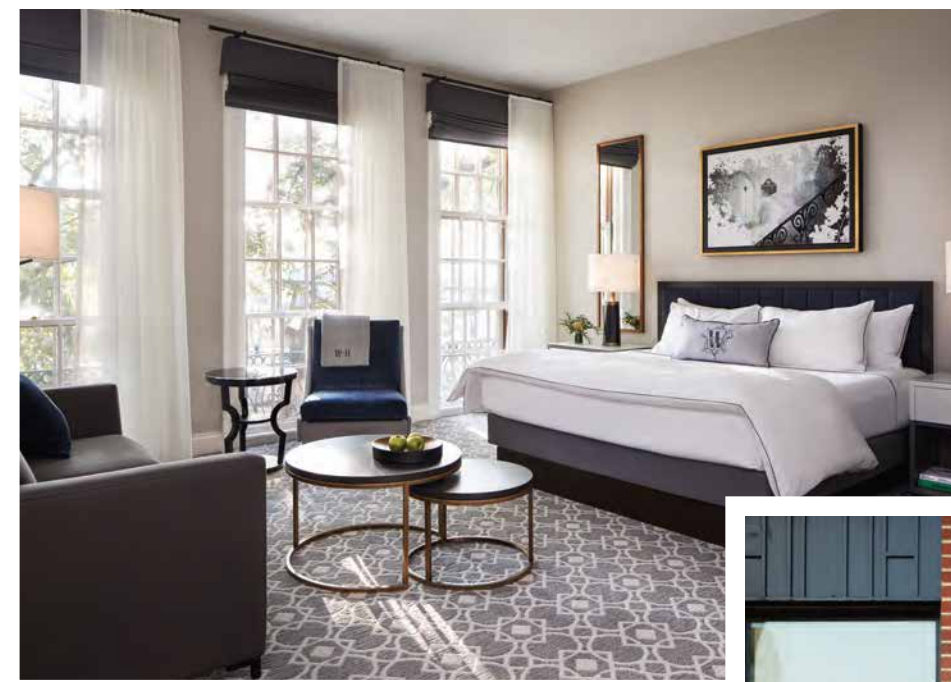
# HOTEL REVUE

## BEACON HILL'S NEWEST GEM

By Brianna Robertello

Located in the historic heart of Beacon Hill, The Whitney Hotel is Boston's bustling stay-cation hotspot. The old world meets the new world at this chic boutique hotel, featuring sixty-five rooms including four suites, with stunning views of the city of Boston. Antiquity floods the hotel with its classic brick townhouse exterior, cobblestone walkways and a timeless Victorian charm which is carried throughout the building.

Opening just over a year ago in June 2019, The Whitney Hotel is dedicated to cleanliness and simple, refined comfort. Being our first time staying at a hotel since Covid-19 hit, but their "Rest-Assured" policy put us at ease upon arrival. Face masks are required while roaming the hotel, social distancing is practiced and the hotel ensures that no one will enter your room when you are not in it, limiting the amount of people you come in contact with.



The room have large windows for prime views of the city, to-die-for plush mattresses and superior bath amenities, including snug bathrobes to make you feel right at home. If you're a pet owner like us, or you are traveling with the family, The Whitney Hotel's pet and family-friendly atmosphere and safe, lively surroundings made it the perfect weekend getaway. For delicious eats right inside of the hotel, visit Peregrine, a coastal Mediterranean restaurant featuring exquisite breakfast, lunch and dinner options and a fresh menu each day. If you're looking to venture out for dinner, Yotel's Deck 12 rooftop bar provides incredible views of Boston and the surrounding Seaport area. We

had the opportunity to enjoy dinner at Deck 12 which was a truly phenomenal experience and must-visit spot when in Boston.

Placed on the eclectic crossroads of Charles Street and Cambridge Street, there is never a dull moment. Though the area is secluded and quiet, there is an abundance of things to see and do. With Fenway Park, the Charles River, New England Aquarium and Boston Common encompassing the hotel, there is something to suit all tastes. Convenience is the motto at The Whitney Hotel. Easily accessible elevators, valet parking and complimentary bikes are just the cusp of the benefits.

this hotel offers to guests. We even had the opportunity to drive the 2020 Range Rover Velar during our stay, making getting around the city a breeze. Being over four hours away from home, the drive back is not something we typically look forward to, but the luxury of the Range Rover made the drive one of the best parts of our trip. The optimal location and tranquil ambience of The Whitney Hotel makes for a remarkably unique trip, not too far from home.